

WSD80 2400 2400TEU CONTAINER FEEDER



TECHNICAL SPECIFICATION

Length over all, approx..... 187.7 m
 Deadweight, max..... 28,600 DWT
 Gross Tonnage 24,100 GT
 Net Tonnage 8,940 NT

Design Speed 17.7 knots
 Operation "Worldwide"

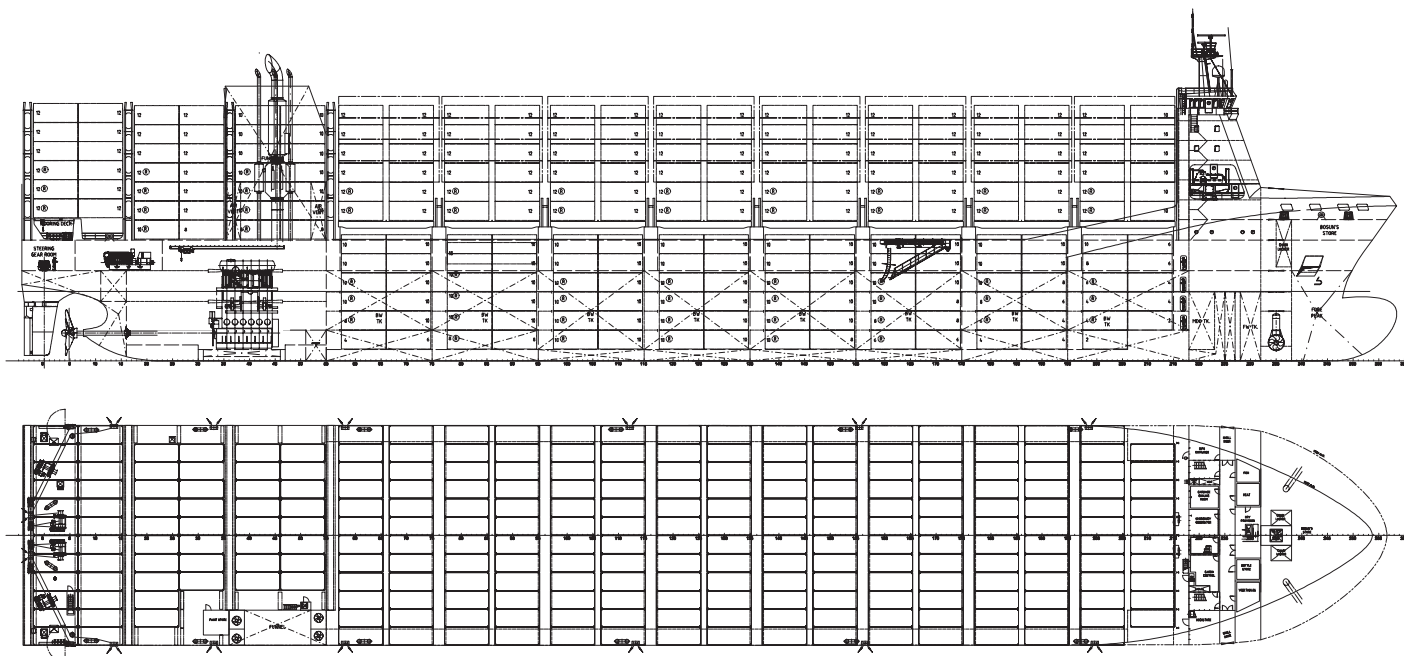
Main engine..... 2-stroke Wärtsilä
 1 x 13,500 kW W6X62

Container capacity2,414 TEU
 Reefer capacity.....548 FEU

ME Daily fuel oil cons.
 Design draught, approx..... 38.6 t

DESIGN HIGHLIGHTS

- Wärtsilä integrated solution
- Spaces for SCR & Scrubber ready
- Superior hull lines, CFD optimized
- Low fuel oil consumption, high propulsive efficiency
- High homogeneous container intake
- Economical and friendly operation
- Flexible container stowage
- Ballast Water Treatment Plant compliant with the latest MARPOL V
- Latest rules and regulations for container feeder
- Inherent crew comfort by segregation of deckhouse and engines/propeller
- Forward accommodation for highest TEU intake and the best visibility
- Comply with EEDI Phase 3 acc. to MEPC.203(62)



MAIN DIMENSIONS

Length over all, approx.	187.70 m
Length PP	177.50 m
Breadth moulded	30.00 m
Depth to main deck	16.50 m
Draught, design	9.50 m
Draught, scantling	10.60 m
Deadweight (T= 10.60 m)	28,600 t

SERVICE SPEED & ENDURANCE

Max. Speed	19.0 knots
Service Speed.....	17.7 knots
Endurance, approx	18,300 nm
(service speed, design draught, with 15% SM)	

TANK CAPACITY

HFO capacity, approx.	1,600 m ³
MDO capacity, approx.	380 m ³
FW capacity, approx.	330 m ³
Ballast capacity approx.	11,600 m ³

STACK WEIGHT

Hatch cover 20'/40'/45'	70t/105 t
Main deck 20'/40'/45'	90t/120 t
In holds 20'/40'/45'	150t/180 t

CONTAINER CAPACITY

Container position	
On Deck (6 tiers)	1,582 TEU
In Hold	832 TEU
Total	2,414 TEU

Reefer plug position	
(on deck/in hold)	296/252 TEU

Dangerous cargos in all of cargo holds 2/3/4

Container intake at Design draught

HOMO 11t/TEU.....	1,671 TEU
HOMO 14t/TEU	1,411 TEU

Container intake at Scantling draught

HOMO 11t/TEU	1,833 TEU
HOMO 14t/TEU	1,639 TEU

Based on ISO standard container, a rel. VCG of 45%

E-PLANT 230 V/450 V

Power	450 V, 60 Hz
Lighting	230 V, 60 Hz
Automation	230 V, 60 Hz / 24 VDC

MACHINERY

Main engine (6X62), MCR	13,500 kW
NCR (76% MCR)	10,260 kW
Generator sets	4 x 1,405 kW
Emerg. generator	1 x 150 kW
Bow thrusters	1 x 1,110 kW
Propeller.....	1 x FPP, dia. 6,500 mm

FUEL CONSUMPTION, DESIGN DRAUGHT

Service speed, no reefers	41.6 t/day
Service speed, all reefers	58.2 t/day

PERFORMANCE, SERVICE SPEED, SCANTLING DRAFT

ME FOC 14t/TEU [g/TEU/nm]	56.4
ME FOC 11t/TEU [g/TEU/nm]	50.5

ACCOMMODATION

25 persons full HVAC in single cabins plus one Suez Crew cabin for 6 Suez

CLASSIFICATION

LR +100A1, Container Ship, ShipRight (SDA, FDA, CM, ACS(B)), *IWS, LI, BoxMax(V,W), ECO(BWT, EEDI-3, IHM),+LMC, UMS, NAV1, with descriptive notes: ShipRight(BWMP(T), SERS, SCM), CSA"

Or equivalent

WÄRTSILÄ® is a registered trademark. Copyright © 2015 Wärtsilä Corporation. Specifications are subject to change without prior notice.

shipdesign@wartsila.com

WARTSILA.COM


WÄRTSILÄ