

WSD80 2100

2100TEU Bangkok Max Size

DATASHEET



Design highlights

- Forward accommodation for highest TEU intake (visibility)
- Inherent crew comfort by segregation of deckhouse and engines/propeller
- Fully non-sequential pontoon hatch cover operation
- Mix stowage in holds of 2 tiers HC and 3 tiers std. TEU
- Optimum crane arrangement (optional) for fast loading/unloading in ports
- Optimised hull lines for highest efficiency and lowest accelerations
- Available configuration with SCR (NOx) and Scrubber (SOx) technology
- Ballast water treatment plant compliant with MARPOL V
- Sewage and garbage handling fully compliant with MARPOL IV/V
- Daily fuel consumption 55.7 t/day (Design Draught, ME & AE, all reefers)

SPECIFICATION IN BRIEF

Length over all	172.2 m
Gross tonnage	17,400 GT
Net tonnage	7,300 NT

Design speed	16.2 knots
Operation area	"Worldwide"

Main engine	2-stroke Wärtsilä 1 x 15,600 kW 6X62
-------------	--

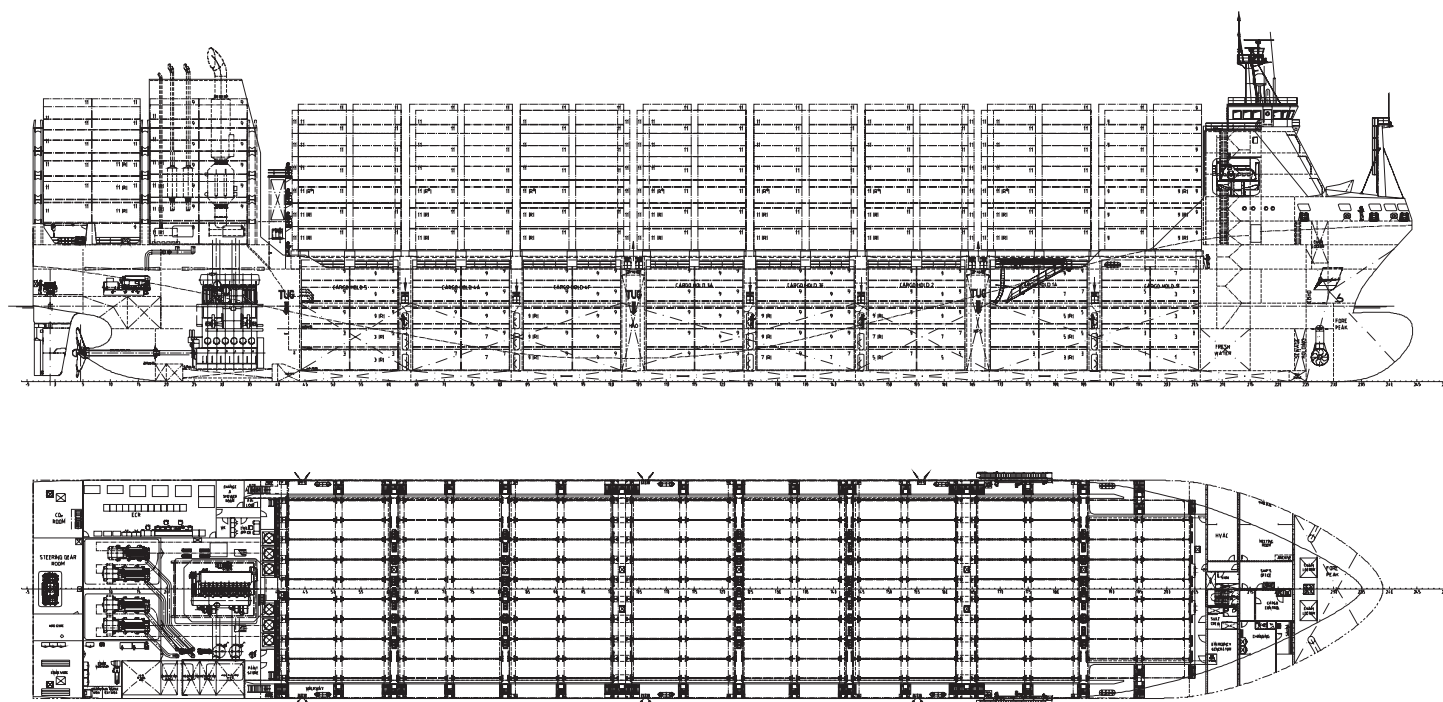
Aux engines	3 x 1,405 + 1,055 kW 4-stroke Wärtsilä 3 x AuxPac 8L20 4-stroke Wärtsilä 1 x AuxPac 6L20
-------------	--

Container capacity	2,083 TEU
Reefer plugs	up to 485

ME fuel oil cons	44.1 t/day at 20 kts on 8.5m
------------------	---------------------------------



Fig.1 Detailed elavation drawings



TECHNICAL SPECIFICATION

MAIN DIMENSIONS

Length over all	172.2 m
Length PP, approx.	162.1 m
Breadth moulded	27.5 m
Depth to main deck	13.7 m
Draught, design	8.5 m
Draught, scantling	9.5 m
Deadweight (T= 9.5 m)	22,015 t

SPEED

Design Speed (NCR, T= 8.5 m)	20 kts
Max. Speed (MCR, T= 9.5 m), approx.	20.5 kts

CAPACITIES

Hold capacity, approx.	32,400 m³
FO capacity, approx.	2,200 m³
FW capacity, approx.	180 m³
Endurance, approx.	12,300 nm

Containers in hold (std. 5 tiers)	600 TEU
Containers on deck (std. 6 tiers)	126 TEU
Containers on deck (std. 7 tiers)	1483 TEU
Max. TEU (std. 7 tiers)	2083 TEU
Reefer plugs (on deck/hold)	384/101
Containers 45' (on deck)	330
Containers pallet wide	224 TEU
Stability containers 14 t/TEU	1258 TEU
..... (T= 9.5 m, with VCG acc. IMO)	
Dangerous cargoes in C/H no. 2, 3 & 4	

SPECIAL EQUIPMENT

- Cell guides on aft deck (2 x 40 ft ays)
- B.W. Treatment unit, Wärtsilä WT500i
- Integrated fresh water exhaust cleaning system (SOx reduction) (optional)

DECK'S MACHINERY

- Two combined anchor/mooring winches fwd
- Two mooring winches aft
- Electro hydraulic steering gear for flap rudder

DECK'S EQUIPMENT

- Davit launched lifeboats for 25 persons
- Life rafts for 25 persons
- Life raft for 6 persons

FUEL CONSUMPTION

Speed [kn]	T= 8.5 m [t/day]	T= 9.5 m [t/day]
14	15.9	18.9
16	21.8	27.0
18	30.2	35.4
19	35.9	42.1
abt. 20	44.1	52.5

(Basis fuel with LHV of 42,700 kJ/kg)

PROPULSION PLANT

- 2-stroke Wärtsilä main engine
1 x 6X62, 15,600 kW at 103 rpm
- FP-propeller, approx. Ø 6500 mm, 103 rpm

AUXILIARY ENGINE PLANT

- 4-stroke aux. engines
3 x 1,405 kWe Wärtsilä AuxPac 8L20
1 x 1,055 kWe Wärtsilä AuxPac 6L20
- Emergency genset, 200 kWe
- Bowthruster 1,115 kW, Wärtsilä CT-200H

E-PLANT 230 V/450 V (option 690 V)

Power	450 V, 60 Hz
Lighting	230 V, 60 Hz
Automation	230 V, 60 Hz / 24 VDC

ACCOMMODATION

25 persons fully air-conditioned single cabins

CLASSIFICATION

DNVGL +1A, Container ship, Safelash, COAT-PSPC(B), E0, NAUT-NAV, LCS, DG-P, BWM-T, Clean, BIS, TMON, Recyclable

Or equivalent